



CONNECTDEC Type COMPACDEC

SEMI FLEXIBLE CORRUGATED DUCTING

The **CONNECTDEC TYPE COMPACDEC** consists of a **heavy multiple layered corrugated aluminium** innerduct. The duct is standard fitted with metal sleeves at both ends to fit to any rigid ductwork or appliance instantly.

Choice between: (Fit according to EN1506)

Type 1) Male - Male

Type 2) Male - Female

Type 3) Female - Female

Article code: CO(1,2,or3)CD{Ø}/Length e.g. CO3CD100/1,0 (type 3 Ø100mmx1Mtr)

APPLICATIONS

- **THE Solution to over bridge inaccuracy in measurements.**
- **Saves installation time and material.**
- Can be combined immediately with our air valves (e.g. DAV or DVSC)
- Suitable for mechanical air supply systems and air conditioning systems
- Systems, where vapors should be exhausted
- Above mentioned systems, where a special mechanical strength is required



SPECIFICATIONS

Article code:	CO(1,2,3)CD{Ø}/L
Temperature range:	-30 °C to 250 °C Peak +400°C
Operating pressure:	up to +3000 Pa
Operating air velocity:	max. 30 m/s
Min. bending radius:	1 x Ø
Standard diameter range:	80 – 315 mm
Standard length:	0,5+1,0+1,5 mtr

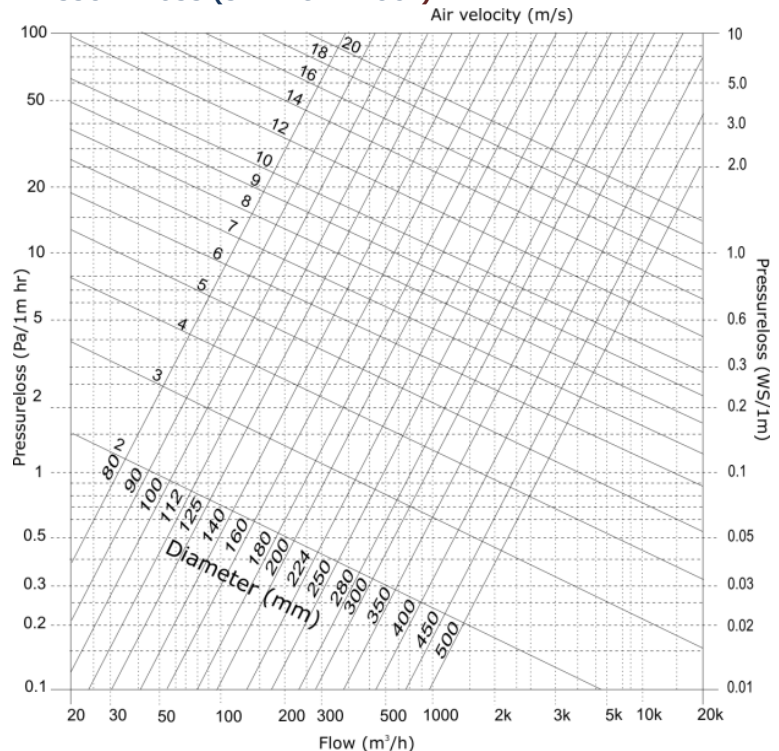
CONSTRUCTION

Total layers:	2
---------------	---

CLASSIFICATIONS

EU (EN 13501-1):	A1
UK (BS476):	Part 4, 6, 7 and 20
FR (NF):	M0
DE (DIN4102)	A1

PRESSURE LOSS (STRAIGHT DUCT)



The **CONNECTDEC TYPE COMPACDEC** fulfills all the requirements and are classified as specified within EN 13180: *Ventilation for buildings – Ductwork - Dimensions and mechanical requirements for flexible ducts.*

LIABILITY:

The information contained in this brochure was current on the publication date. DEC INTERNATIONAL reserves the right to make changes in details at any time without prior notice. In order to avoid misunderstandings, any interested party is advised to contact DEC INTERNATIONAL checking for any changes in materials and/or information after this brochure was published.

PLEASE NOTICE:

The consultant is responsible for the actual installation and mounting of the product. The mentioned values with respect to temperatures are not appropriate to be used to determine the physical properties. These properties are also dependent on humidity and the temperature of the air inside and outside of the H.V.A.C. system.

TRADEMARKS:

CONNECTDEC, COMPACDEC, the DEC logo and DEC International are trademarks, or registered trademarks of Dutch Environment Corporation BV in the Netherlands and/or other countries.

RESTRICTIONS:

The CONNECTDEC ducts are not suitable for discharging combustion products from open fireplaces and oil-fired boilers. Neither are the ducts suitable for transporting air with a high concentration of acid and base.

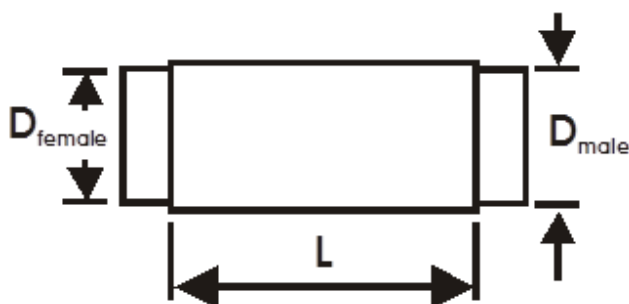


CONNECTDEC Type COMPACDEC

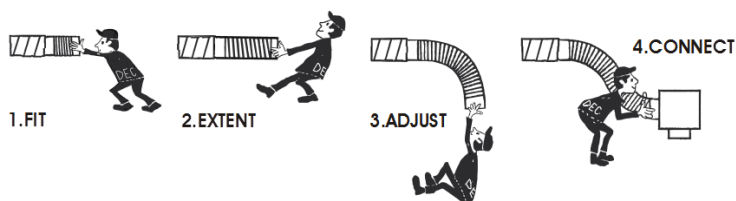
SEMI FLEXIBLE CORRUGATED DUCTING

DIMENSIONS Metal sleeves

According to EN-1506			
D _{nom} (mm)	D _{female} (mm)	D _{male} (mm)	Tol.
080	80.5	79.3	+0 ; -0.5
100	100.5	99.3	+0 ; -0.5
125	125.5	124.3	+0 ; -0.5
150	150.6	149.3	+0 ; -0.6
160	160.6	159.3	+0 ; -0.6
200	200.7	199.3	+0 ; -0.7
250	250.8	249.3	+0 ; -0.8
315	315.9	314.3	+0 ; -0.9



HOW TO INSTALL:



LIABILITY:

The information contained in this brochure was current on the publication date. DEC INTERNATIONAL reserves the right to make changes in details at any time without prior notice. In order to avoid misunderstandings, any interested party is advised to contact DEC INTERNATIONAL checking for any changes in materials and/or information after this brochure was published.

PLEASE NOTICE:

The consultant is responsible for the actual installation and mounting of the product. The mentioned values with respect to temperatures are not appropriate to be used to determine the physical properties. These properties are also dependent on humidity and the temperature of the air inside and outside of the H.V.A.C. system.

TRADEMARKS:

CONNECTDEC, COMPACDEC, the DEC logo and DEC International are trademarks, or registered trademarks of Dutch Environment Corporation BV in the Netherlands and/or other countries.

RESTRICTIONS:

The CONNECTDEC ducts are not suitable for discharging combustion products from open fireplaces and oil-fired boilers. Neither are the ducts suitable for transporting air with a high concentration of acid and base.